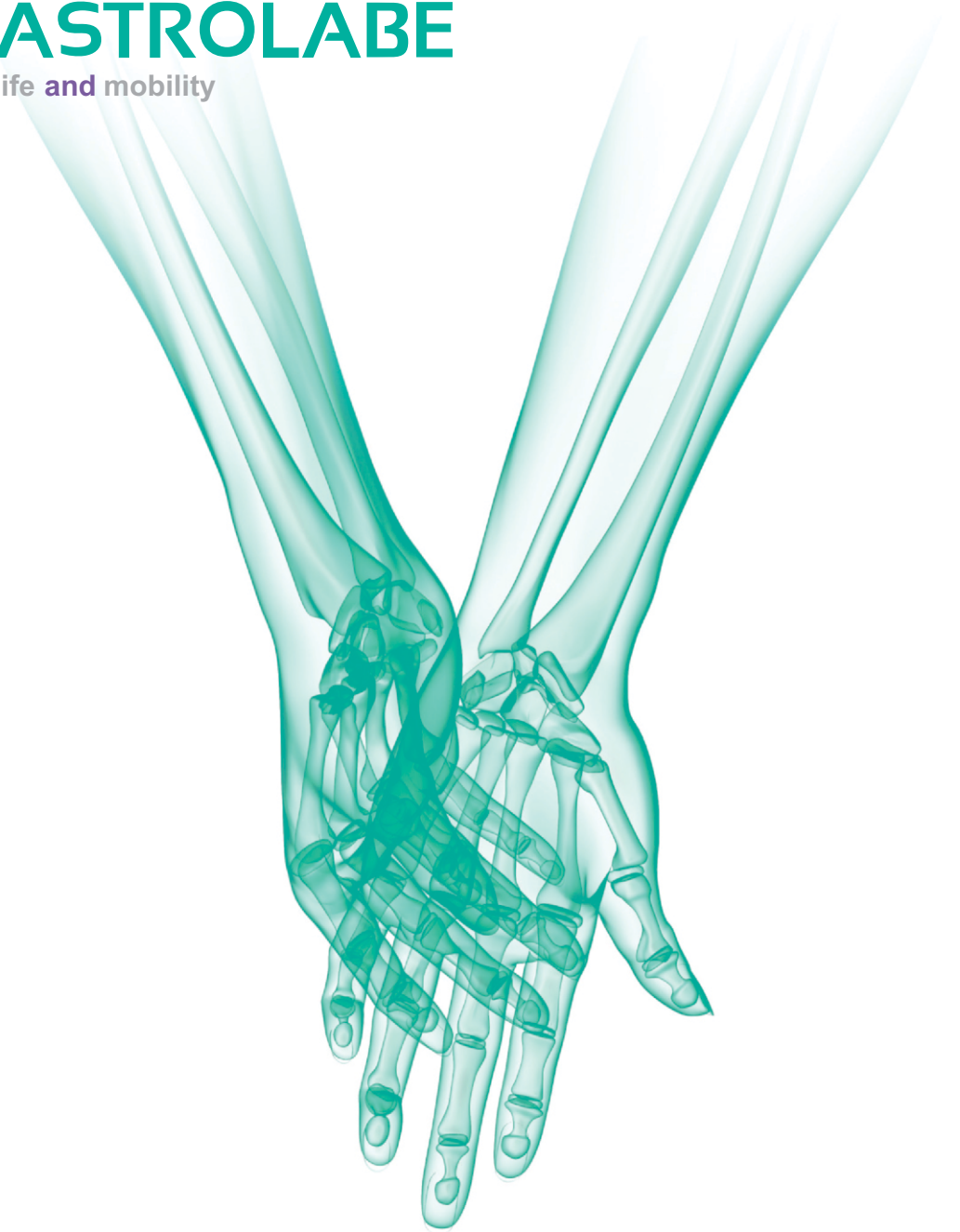




ASTROLABE
life and mobility



**2.7 mm SMA (Small Plates System)
Surgical Technique**

Astrolabe recognizes that proper surgical procedures and techniques are responsibilities of medical professionals.

The following guidelines are provided for information purposes only. Each surgeon must evaluate the appropriateness of the procedures based on their medical training, experience and condition of the patient. Before using the system, the surgeon must consult the operating instructions for additional warnings, precautions, indications, contraindications and adverse effects.

SMA 2.7 mm - SMALL PLATE SYSTEM



2.7 mm
Cortical/ Locking

Indications

- Reconstructive Surgery
- Osteosynthesis Surgery
- Arthrodesis Surgery

1,6 mm thickness



- Ulna and clavicle
2,0 mm thickness

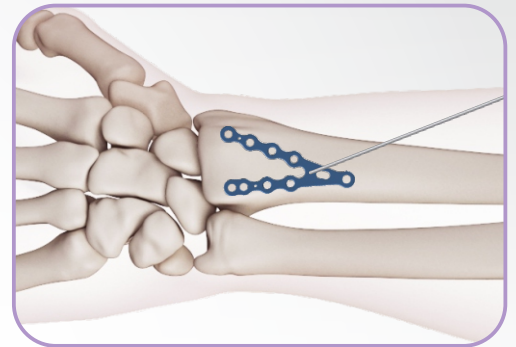


- Primary treatment of distal radius fracture
- Revision/ Correction of poorly healed radius fractures

1,5 mm thickness

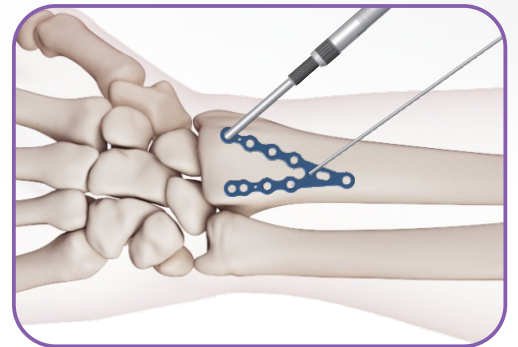
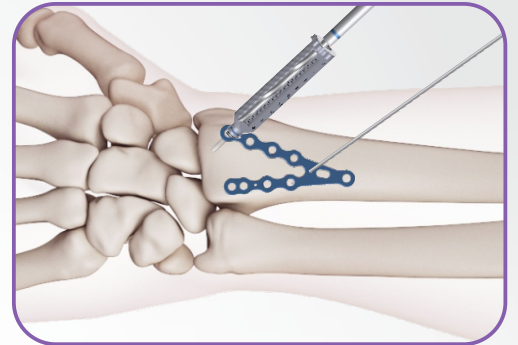


- After choosing the appropriate plate, if necessary, it can be moulded (item 08/09) to better fit the patient's anatomy and is provisionally fixed in place with a Kirschner wire.

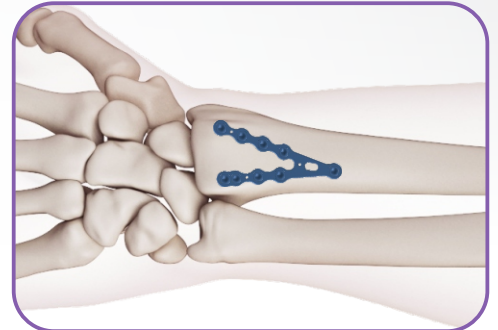
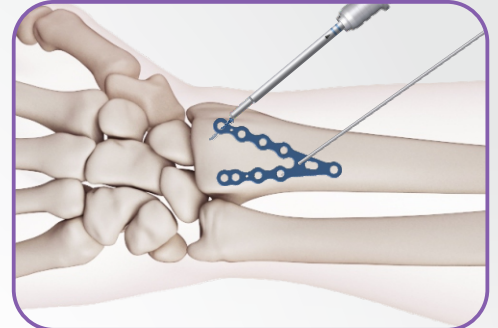


- **Note:** Avoid excessive modeling of the plate as this can compromise its locking mechanisms. When using plate benders, holes adjacent to the bender can lose the ability to lock. If this occurs, a Cortical Screw must be used.

- Properly place the Threaded Graduated Drill Guide (item 04) by turning it into the threaded hole, then proceed with drilling using the Drill Bit (item 01/02).
- The reading of the screw measurement can be made directly on the Graduated Drill Guide (item 04) or using the Depth Gauge (item 06).



- Use the Handle (item 03) and Shaft Screwdriver (item 05) to position the screws.
- The placement of the screws procedure is repeated as many times as necessary, for optimal fixation of the plate.
- Check the final position of the screws through the image intensifier.
- Proceed with x-ray to check if final position is according to initial intention.



01 **Drill Bit, Ø2.0 x 120 mm, Stop 50 mm,**
AO Coupling, Blue Code
Cod.: 09.01.03.20020



02 **Drill Bit, Ø2.0 x 125 mm, Stop 50 mm,**
Stryker Coupling, Barrel Ø4.5 mm,
Blue Code
Cod.: 09.01.07.20021



03 **Handle, Cannulated,**
AO Coupling, 120mm, Green
Cod.: 09.04.04.12030



04 **Graduated Drill Guide,**
Ø2.0 x 40 mm, Threaded,
Blue Code
Cod.: 09.05.14.04020



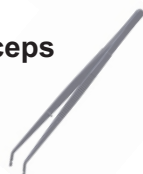
05 **Shaft Screwdriver, Torx-8, 90 mm,**
AO Coupling, Blue Code
Cod.: 09.07.04.08091



06 **Depth Gauge, 60 mm**
Cod.: 09.08.01.00060



07 **Plate and Screw Holding Forceps**
Angled, 150 mm
Cod.: 09.10.06.00150



08 **Bender**
for 2.7/3.5 mm System Plates
Cod.: 09.13.00.02735



09 **Bending Pliers**
Flat, 135 mm
Cod.: 09.14.02.00135





**2.7 mm
SMA
(Small Plates System)
Surgical Technique**