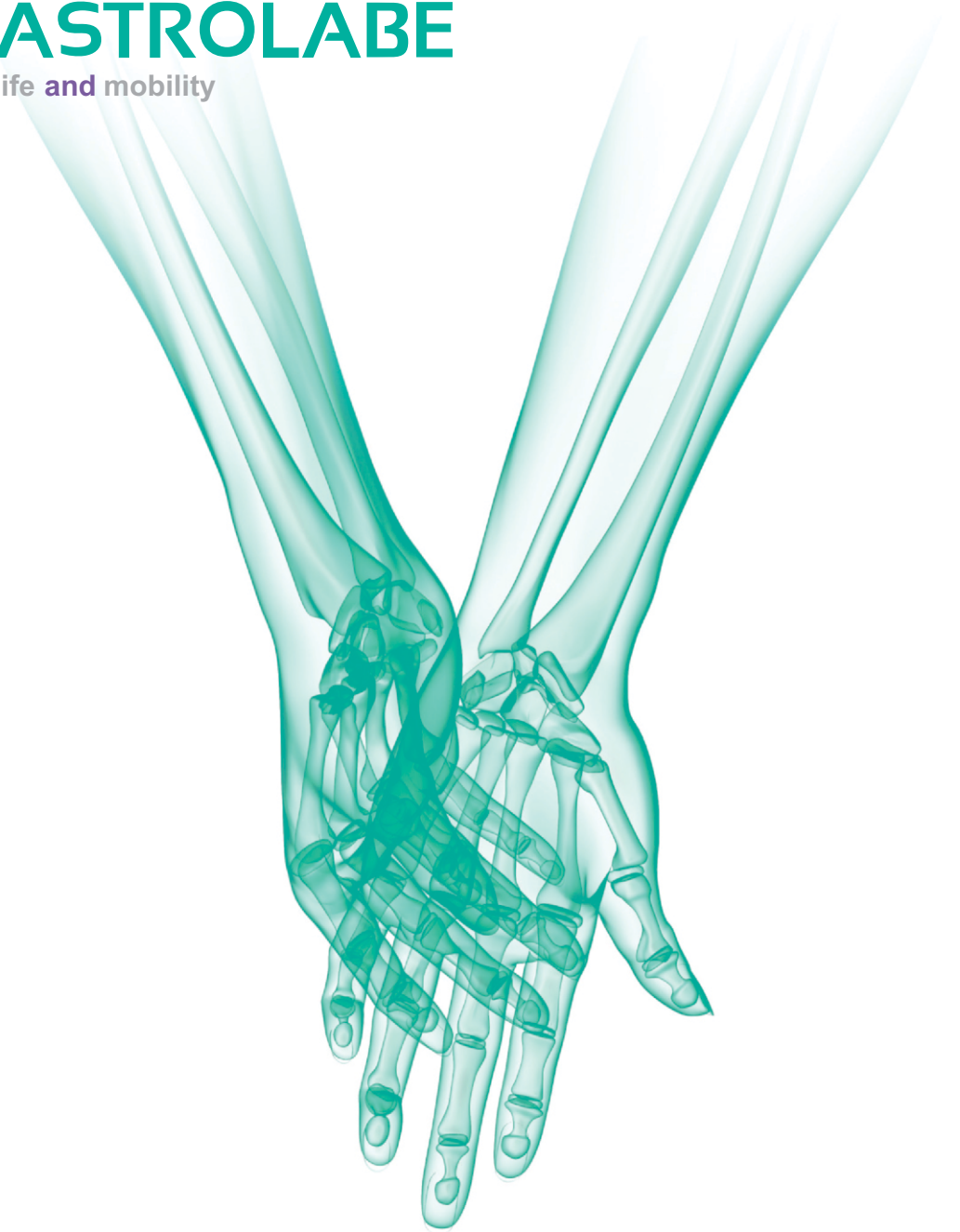




ASTROLABE
life and mobility



**2.7mm RLS
(Radius Locking Plate System)
Surgical Technique**



ASTROLABE

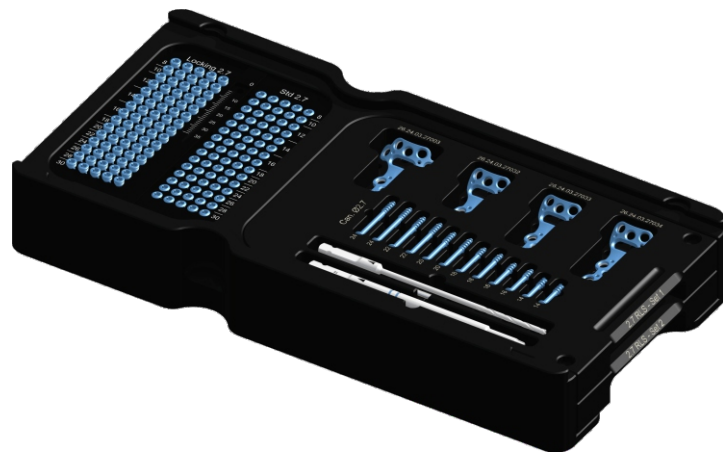
life and mobility

Medical Implants

Astrolabe recognizes that proper surgical procedures and techniques are responsibilities of medical professionals.

The following guidelines are provided for information purposes only. Each surgeon must evaluate the appropriateness of the procedures based on their medical training, experience and condition of the patient. Before using the system, the surgeon must consult the operating instructions for additional warnings, precautions, indications, contraindications and adverse effects.

2.7 mm RLS RADIUS LOCKING PLATE SYSTEM



2.7 mm RLS SYSTEM

GENERAL FEATURES AND INDICATIONS

- Astrolabe 2.7mm RLS (Radius Locking Plate System) is designed to give support to surgeons for Combined Proximal Radial Head and Radial Neck Fractures.
- The 2.7mm RLS System can also be used for individual fractures treatment of Proximal Radial Head Fractures and Proximal Radial Neck Fractures
- The 2.7mm RLS system is intended to maintain the radius head and neck intact without the need of joint replacement.
- Cannulated screws bellow are integral part of the 2.7mm RLS System:
 - Ø2.7 mm Cannulated Screw, Partly Threaded
 - Ø2.5xØ3.2 mm Cannulated Compression Screw
 - Ø3.0xØ3.9 mm Cannulated High Compression Screw.

2.7 mm RLS SYSTEM Plates and Screws



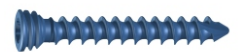
**Locking Plate, Proximal
Radial Head and Neck,
3 Holes Head**



**Locking Plate, Proximal
Radial Head and Neck**



**2.7mm
CORTICAL SCREW**



**2.7mm
LOCKING SCREW**



**2.5mm x 3.2mm
CANNULATED COMPRESSION
SCREW**

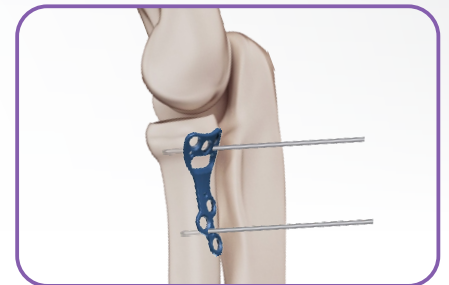


**3.0mm x 3.9mm
CANNULATED HIGH
COMPRESSION SCREW**



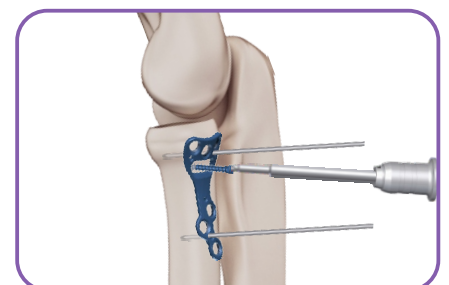
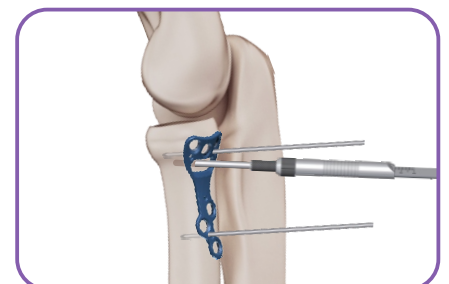
**Ø2.7 mm Cannulated Screw,
Partly Threaded**

- Select the most suitable plate for the procedure
- After reducing the fracture, place the selected plate size and position it provisionally with Kirschner Wires.



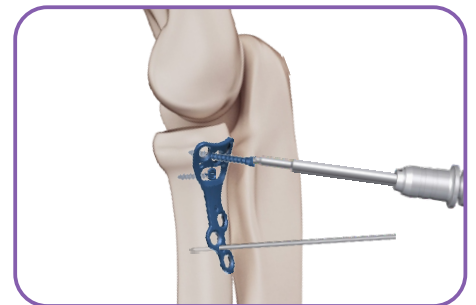
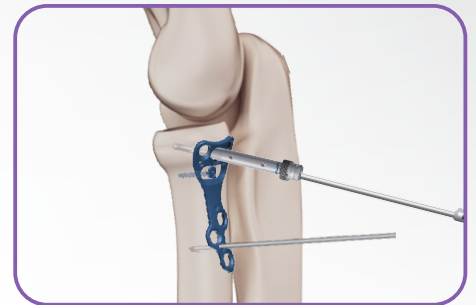
Cortical Screw Positioning

- Position the Drill Sleeve (item 11) attached to the Drill Guide Handle (item 10) over the oblong hole and proceed with drilling using the Drill Bit (item 01/03).
- The reading of the screw measurement can be made by using the Depth Gauge (item 15)
- Use the Shaft Screwdriver (item 09) properly attached to the Handle (item 12) and insert the screw.



Locking Screw Positioning

- Once the plate is temporarily fixed, attach the Threaded Drill Guide (item 18 - **it is mandatory when using Locking Screws**) on the plate and proceed with a perpendicular drilling, using the Drill Bit (item 01/03)
- The reading of the screw measurement can be made by using the Depth Gauge (item 15)
- Use the Shaft Screwdriver (item 09) properly attached to the Handle (item 12) and insert the screw.
- The procedure of placement of the screws is repeated as many times as necessary, for optimal fixation of the plate.
- Check the final position of the screws through the image intensifier to check if final position is according to initial intention.



01 **Drill Bit, Ø2.0 x 100 mm**
twist length 30 mm, AO Coupling
Cod.: 09.01.01.20100



06 **Countersink, Cannulated,**
for High Compression Screw Ø3.0
x Ø3.9 mm, AO Coupling
Cod.: 09.02.02.03039



02 **Drill Bit, Cannulated,**
Øext. 2.0 x Øint. 1.2 x 95 mm,
twist length 26 mm, AO Coupling
Cod.: 09.01.04.20095



07 **Countersink, Cannulated,**
for Compression Screw Ø2.5 x Ø3.2 mm
Cod.: 09.02.05.02532



03 **Drill Bit, Ø2.0 x 105 mm**
twist length 35 mm, Stryker Coupling
Cod.: 09.01.06.20105



08 **Countersink, Cannulated,**
for High Compression Screw Ø3.0
x Ø3.9 mm
Cod.: 09.02.05.03039



04 **Drill Bit, Cannulated,**
Øext. 2.0 x Øint. 1.2 x 95 mm,
twist length 24 mm
Cod.: 09.01.10.20095



09 **Handle, Cannulated,**
AO Coupling, 120mm, Green
Cod.:09.04.04.12030



05 **Countersink, Cannulated,**
for Compression Screw Ø2.5 x
Ø3.2 mm, AO Coupling
Cod.: 09.02.02.02532



10 **Drill Guide Handle**
Cod.: 09.04.06.00000



- 11 **Drill Sleeve, Ø2.1 x 55 mm**
Cod.: 09.06.00.21055



- 16 **Gauge 40 mm, Direct Measuring,**
for Wire 100 mm, Ø up to 1.4 mm
Cod.: 09.08.02.14040



- 12 **Shaft Screwdriver, Torx-8, 90 mm,**
AO Coupling, Blue Code
Cod.: 09.07.04.08091



- 17 **Plate and Screw Holding Forceps**
Angled, 150 mm
Cod.: 09.10.06.00150



- 13 **Shaft Screwdriver, Cannulated,**
Torx-6, 90 mm, AO Coupling
Cod.: 09.07.08.06090



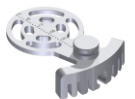
- 18 **Drill Guide Insert, Ø2.0 x 45 mm,**
Threaded, Blue Code
Cod.: 09.27.04.10020



- 14 **Shaft Screwdriver, Cannulated,**
Torx-8, 90 mm, AO Coupling,
Blue Code
Cod.: 09.07.08.08091



- 19 **Fixation Device,**
for Proximal Radial Fractures
Cod.: 09.28.02.00000



- 15 **Depth Gauge, 60 mm**
Cod.: 09.08.01.00060





2.7 mm RLS System (RADIUS LOCKING PLATE SYSTEM) Surgical Technique